



## The Savannah - Modular Available- 4 bed option

Model number: 32ANN28603AH19

**3 beds • 2 baths • 1680 sq.ft. • 28' width • 60' depth**

Our home building facilities invest in continuous product and process improvements. Plans, dimensions, features, materials, specifications and availability are subject to change without notice or obligation. Renderings and floor plans are representative likenesses of our homes and may differ from the actual homes. We invite you to tour a Home Center near you and inspect the highest value in quality housing available or call (830) 620-1141 to speak with a Home Consultant. Copyright 2017, CMH. All rights reserved.

<https://www.claytonhomesofnb.com>

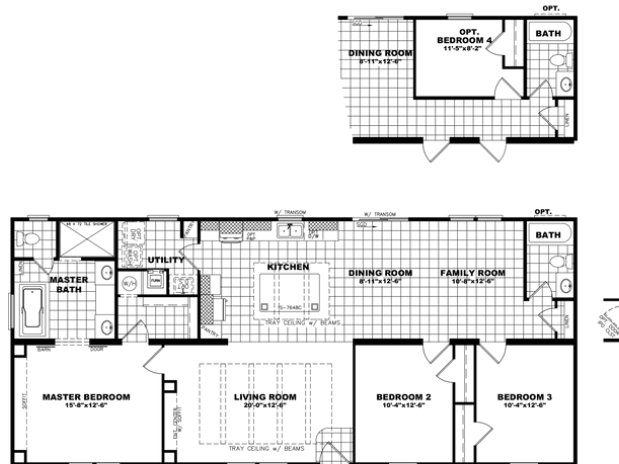
**CLAYTON HOMES-NEW  
BRAUNFELS**

**2137 NORTH INTERSTATE 35  
NEW BRAUNFELS, TX 78130**

Monday - Thursday: 9am - 7pm  
Friday: 9am - 6pm  
Saturday: 9am - 5pm  
Sunday: Closed

(830) 620-1141





### ANNIVERSARY 3.0

Model #: ANN28603A  
Drawing #:  
32M454

## The Savannah - Modular Available- 4 bed option

Model number: 32ANN28603AH19

**3 beds • 2 baths • 1680 sq.ft. • 28' width • 60' depth**

Our home building facilities invest in continuous product and process improvements. Plans, dimensions, features, materials, specifications and availability are subject to change without notice or obligation. Renderings and floor plans are representative likenesses of our homes and may differ from the actual homes. We invite you to tour a Home Center near you and inspect the highest value in quality housing available or call (830) 620-1141 to speak with a Home Consultant. Copyright 2017, CMH. All rights reserved.

<https://www.claytonhomesofnb.com>

### CLAYTON HOMES-NEW BRAUNFELS

2137 NORTH INTERSTATE 35  
NEW BRAUNFELS, TX 78130

Monday - Thursday: 9am - 7pm  
Friday: 9am - 6pm  
Saturday: 9am - 5pm  
Sunday: Closed

(830) 620-1141